

# WHAT IS SHAPE BHAM?

Shape Bham is an initiative that brings academic trained researchers and city planners, alike, to translate research into practice, and to integrate health and equity into the Birmingham City planning process at the neighborhood level. As part of this endeavor we will pilot 20 neighborhood health report cards for 20 of Birmingham's 99 neighborhoods, with the intention of eventually replicating the report cards for the remaining 79 neighborhoods, pending available funding at later date.

# WHAT ARE THE SOCIAL DETERMINANTS OF HEALTH?

The social determinants of health are the conditions in which people are born, grow, live, work and age. These circumstances are shaped by the distribution of money, power and resources at global, national and local levels. The social determinants of health are mostly responsible for health inequities - the unfair and avoidable differences in health status seen within and between countries.

# THE NEIGHBORHOODS

## 20 PILOT NEIGHBORHOODS

- |                   |                       |
|-------------------|-----------------------|
| Airport Highlands | Riley                 |
| Belview Heights   | Rising West Princeton |
| East Lake         | Roebuck               |
| East Thomas       | Roosevelt             |
| Ensley            | Smithfield Estates    |
| Hooper City       | Sun Valley            |
| Kingston          | Tuxedo                |
| Liberty Highlands | Wahouma               |
| North Titusville  | West Goldwire         |
| Overton           | Woodlawn              |

# ADVOCATING FOR BETTER NEIGHBORHOODS IS ADVOCATING FOR BETTER HEALTH.



VISIT [www.shapebham.com](http://www.shapebham.com)

**City of Birmingham**  
 Tim Gambrel, Principal Planner  
 Timothy.Gambrel@birminghamal.gov  
 205-297-8059

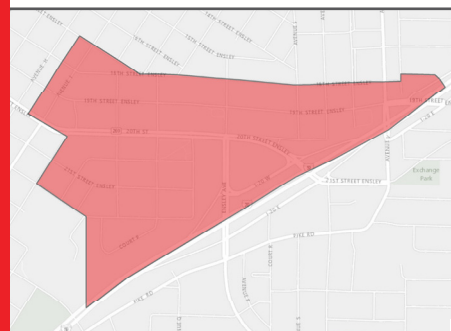
This initiative is supported by a grant from the Health Impact Project, a collaboration of the Robert Wood Johnson Foundation and the Pew Charitable Trusts.

## SHAPE SCORE CARD

# TUXEDO

Overall Quality of Life Rank

# 11



Economic Health



Blight



Employment Opportunities



Environmental Hazards



Educational Opportunities



Housing



Natural Areas



Health Systems & Public Safety



Social Cohesion



Neighborhood Characteristics



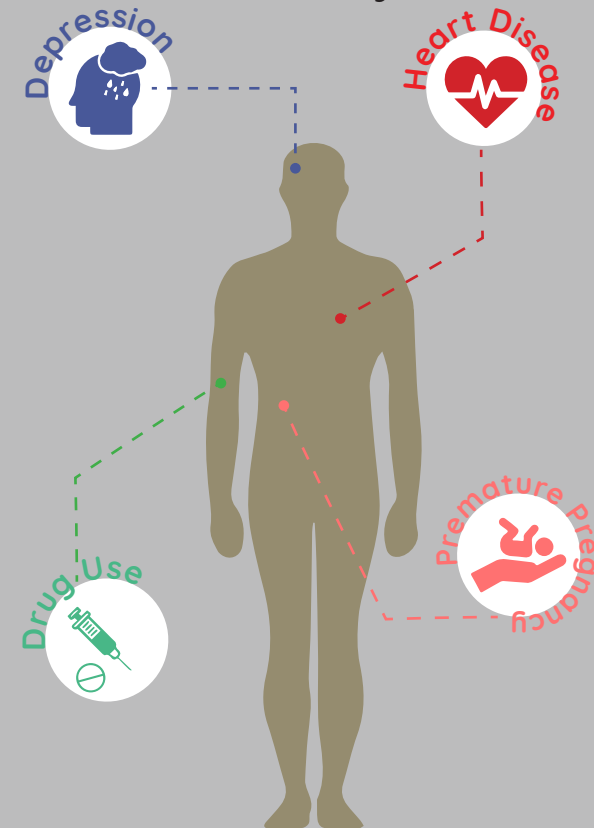
Transportation



VISIT [www.shapebham.com](http://www.shapebham.com)

# RECOMMENDATIONS.

Some of the indicators your neighborhood received a rank between 15-20 include: **Employment Rate, Excessive Housing Cost Burden, Long-term Unemployment, and Public Assisted Households.** Poor ranks in these indicators are linked to increased incidences of the following:



- Partner with local career academies to create an avenue for students to gain internships, apprenticeships, and employment to fill labor market gaps and increase youth employment.
- Apply for a grant from the department of labor, or another government entity, to establish a platform to employment (P2E) program in Birmingham.
- Partner with local non-profits to donate cars to welfare beneficiaries who are seeking employment.



## DEMOGRAPHIC & CONTEXTUAL MEASURES

Concentrated Poverty	<b>70%</b>
Income Inequality	<b>0.0</b>
Life Expectancy	<b>N/A</b>
Park Quality	<b>80/100</b>
Population	<b>500</b>
Racial & Ethnic Diversity	<b>0.4</b>

\* These indicators aren't graded.



## BLIGHT DOMAIN

**Abandoned Structures <sup>5</sup>	<b>13</b>
**Tax Delinquent Properties <sup>5</sup>	<b>9</b>
**Visual Property Nuisances <sup>5</sup>	<b>10</b>



## ECONOMIC HEALTH DOMAIN

Business Retention	<b>19</b>
Local Business Vitality	<b>15</b>
Pay Day Loans	<b>19</b>

The indicators are ranked from 1-20, with 1 being the highest rank and 20 being the lowest rank, according to the Healthy Community Assessment Tool (HCAT).



## EDUCATIONAL OPPORTUNITIES DOMAIN

**Adult Educational Attainment <sup>3</sup>	<b>12</b>
**High School Graduation Rate <sup>3</sup>	<b>12</b>
**Preschool Enrollment <sup>3</sup>	<b>10</b>
**Reading Proficiency <sup>3</sup>	<b>3</b>
School Readiness Scores	<b>N/A</b>



## EMPLOYMENT OPPORTUNITIES DOMAIN

Employment Rates	<b>20</b>
Long-Term Unemployment	<b>20</b>
Public Assisted Households	<b>20</b>
Travel Time to Work	<b>12</b>



## ENVIRONMENTAL HAZARDS DOMAIN

Proximity to Brownfield Sites	<b>1</b>
Proximity to Superfund Sites	<b>1</b>
Residential Proximity to Traffic	<b>17</b>
School Proximity to Traffic	<b>1</b>
Toxic Releases from Facilities	<b>15</b>



## HEALTH SYSTEMS & PUBLIC SAFETY DOMAIN

Chronic School Absence	<b>13</b>
Low Birth Weight	<b>N/A</b>
**Motor Vehicle Collisions <sup>4</sup>	<b>16</b>
**Pedestrian & Bicycle Injuries by Motor Vehicles <sup>4</sup>	<b>19</b>
Preventable Hospitalizations	<b>N/A</b>
**Public Health Nuisances	<b>10</b>
**Violent Crime <sup>4</sup>	<b>17</b>



## HOUSING DOMAIN

Age of Housing	<b>3</b>
Blood Lead Levels in Children	<b>N/A</b>
Excessive Housing Cost Burden	<b>20</b>
Vacancy Rates	<b>16</b>



## NATURAL AREAS DOMAIN

Access to Parks & Open Space	<b>1</b>
Tree Cover	<b>17</b>

\*\*These indicators are weighted. Weighted values range from 2-5, with 5 being of more importance and 2 being of a lesser importance, according to residents and stakeholders.



## NEIGHBORHOOD CHARACTERISTICS DOMAIN

**Food Desert <sup>2</sup>	<b>10</b>
Land Use Mix	<b>1</b>
Offsite Alcohol Outlets	<b>18</b>
**Walkability <sup>4</sup>	<b>2</b>



## SOCIAL COHESION DOMAIN

Residential Mobility	<b>20</b>
Voter Participation	<b>15</b>



## TRANSPORTATION DOMAIN

**Commute Mode Share <sup>4</sup>	<b>3</b>
**Household Transportation Costs <sup>4</sup>	<b>3</b>
**Pedestrian Connectivity <sup>4</sup>	<b>2</b>
**Transit Accessibility <sup>4</sup>	<b>4</b>